

# CHENNAULT

## INTERNATIONAL AIRPORT

Lake Charles, Louisiana



**CHENNAULT INTERNATIONAL AIRPORT** is a leading hub of aerospace activity strategically located in the south central U.S. in Lake Charles, Louisiana. The airport serves general aviation civilian and military aircraft with an FAA contract tower and a first-class FBO—Million Air—providing fuel and terminal service. **CHENNAULT PARK** is home to such corporate tenants as Northrop Grumman, Citadel Completions, Landlocked Aviation Services and Louisiana Millwork in the aerospace and manufacturing industries.

### *Chennault Fast Facts*

- Two-mile-long runway (10,701 feet x 200 feet) with 17-inch-thick concrete, capable of handling the largest aircraft in the world
- FAA contract air traffic control tower
- ILS and GPS approaches
- Part 139 certification
- Uncongested airspace; minimal to no ground delays
- FBO terminal service and fuel (including government contract fuel); general aviation aircraft maintenance
- 24/7 security and fire protection
- 800+ acres of land available for immediate development, including several state-certified development-ready sites, and 60 acres of useable concrete
- \$61 million+ in capital improvement projects over the last 5 years
- A diverse economic base with major tenants engaged in aerospace, manufacturing
- 1.5 million square feet of building/hangar space in use
- Some 1,500 employees work across the airport, with an \$80 million annual payroll
- \$300 million in economic impact annually

### 2 miles of runway

long and strong enough to handle any aircraft, with plenty of uncongested airspace

### 1.5 million

square feet of building/hangar space in use by Chennault Park business tenants

### 1,500

employees working at the airport, with an \$80 million annual payroll

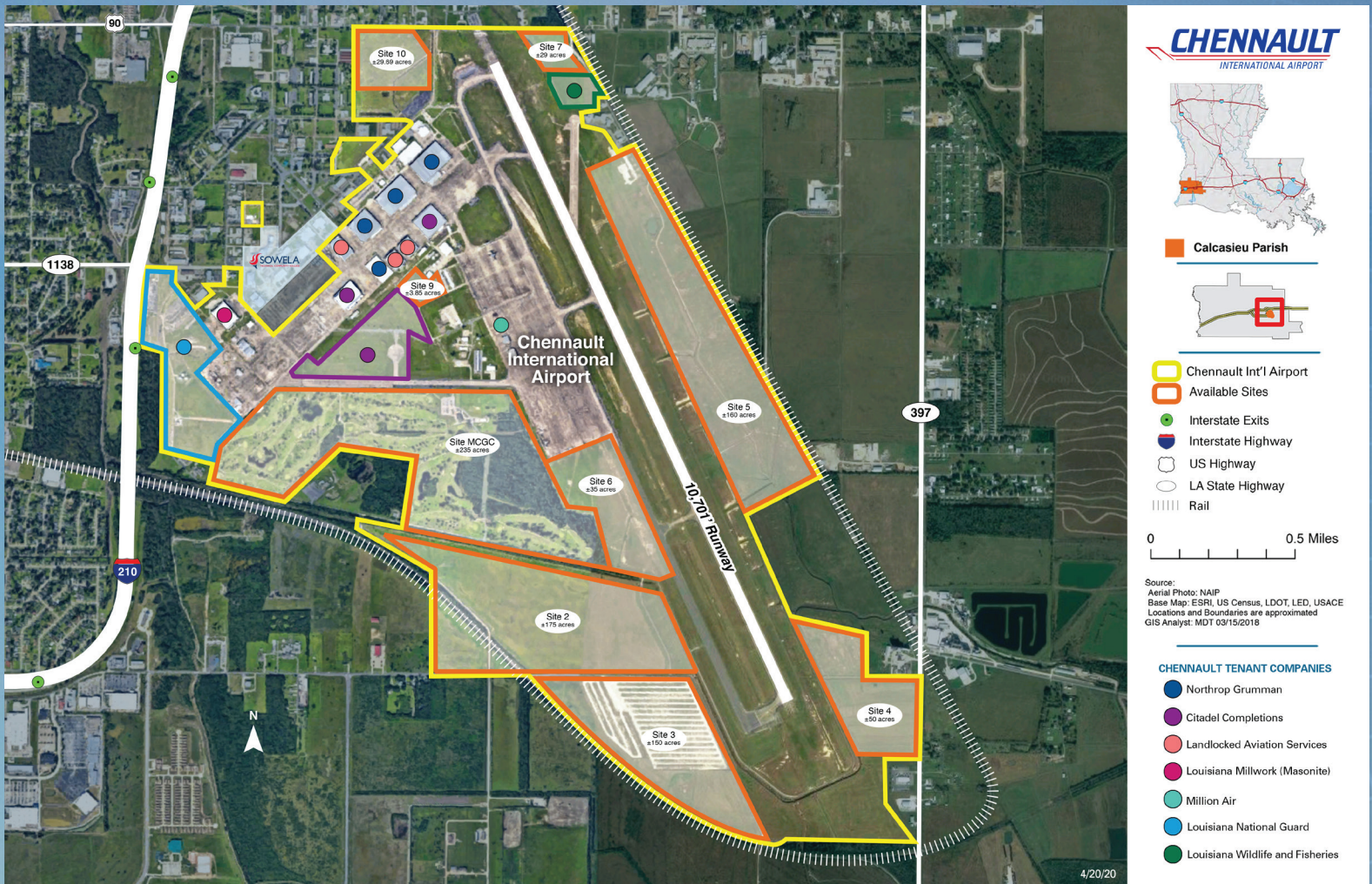




# CHENNAULT PARK

AT CHENNAULT INTERNATIONAL AIRPORT

Chennault Park is a world-class business community that is home base for top companies in aerospace and other industries, with ample room for new development.



## 800+

acres available  
for development

## ACCESS

to nearby rail,  
deepwater port and  
Interstate highways

## INCENTIVES

Opportunity Zone, Enterprise  
Zone, Foreign Trade Zone,  
right-to-work state, significant  
state and local incentives

## WORKFORCE

training onsite by  
Sowela Technical  
Community College

## LOW

utilities and  
lease costs

## STRATEGIC

location at the center of the  
Gulf Coast—a day's drive from a  
huge swath of the southern U.S.

## POSITIVE

business environment  
with the State of Louisiana,  
Calcasieu Parish and  
the City of Lake Charles



DEVELOPMENT INQUIRIES:

**CHENNAULT INTERNATIONAL AIRPORT AUTHORITY**

Kevin Melton, Executive Director

3650 Senator J. B. Johnston Ave. • Lake Charles, Louisiana 70615  
ciaa@chennault.org • 337-491-9961 or 800-272-2422

[www.chennault.org](http://www.chennault.org)

